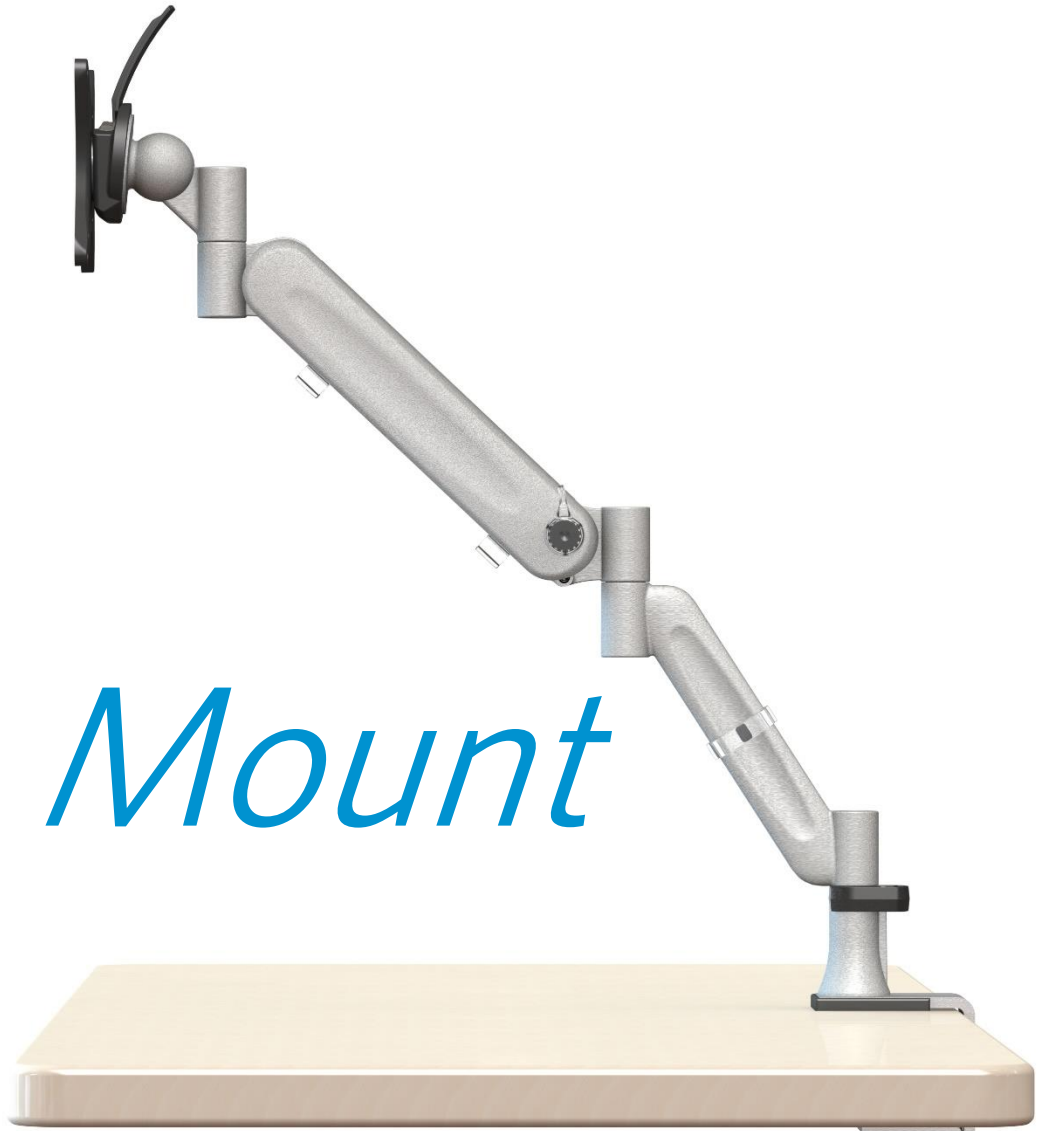


A20 Base Mount



WORKSPACE PRODUCTIVITY TOOLS



Introducing

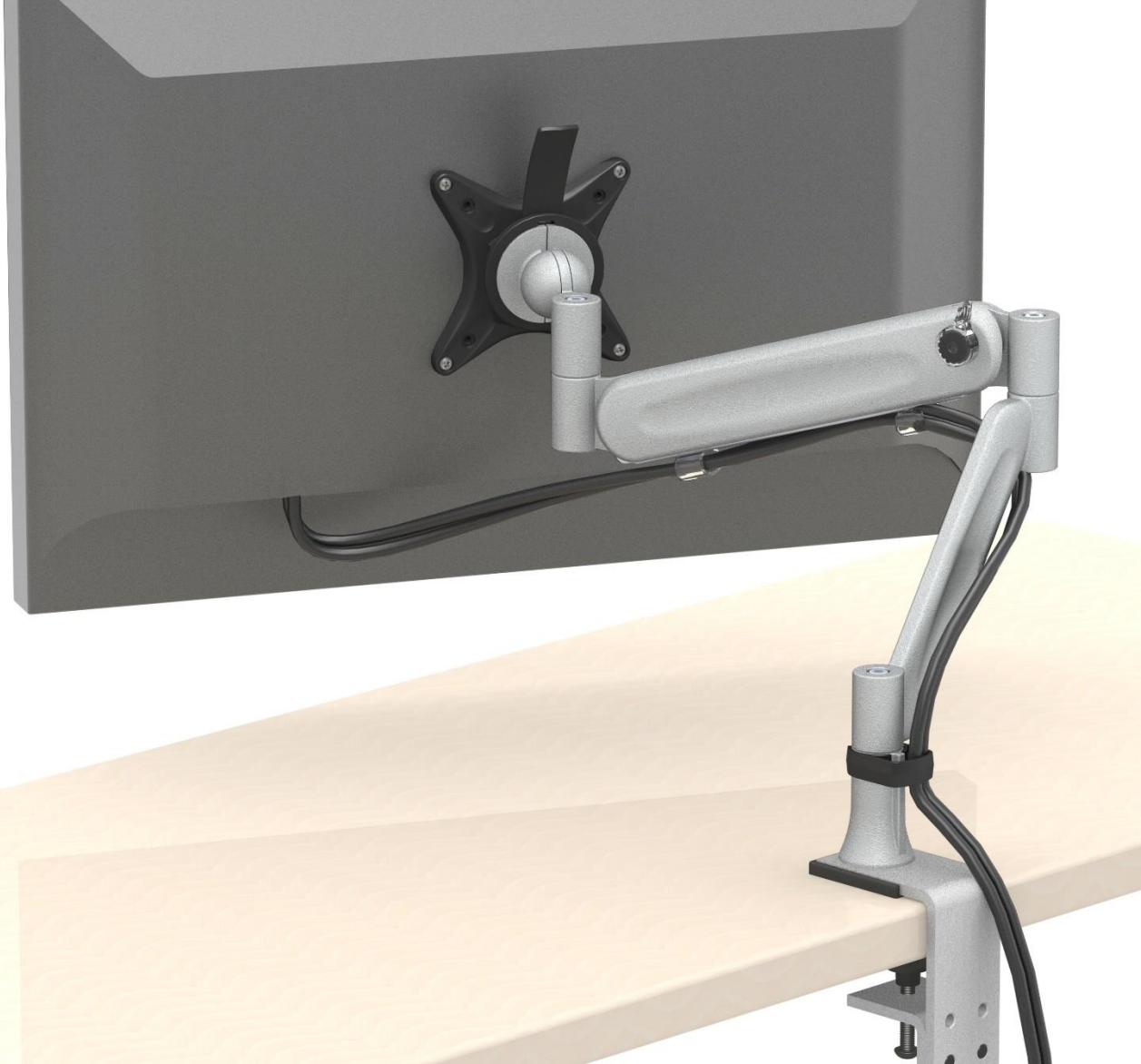
A20 Monitor Mount

from Integ

A20 offers the stability of a fixed monitor mount combined with the ability to vertically adjust the monitor with ease.

A20 responds to the increasing demand for flexibility and adjustability in activity-based office situations.

A20 is geared towards optimum ergonomic conditions and health and safety standards.



The A20 is beautiful in its simplicity and not excessive in any way. In A20, Integ have created for you an aesthetically pleasing and highly functional ergonomic solution that differentiates itself from anything else on the market.

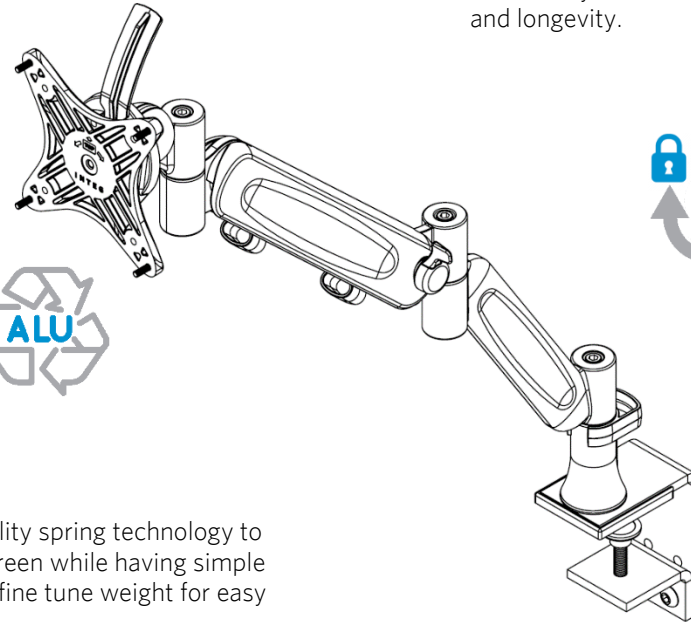


A20 caters for a range of monitor weights (0-10kg) and allows for fingertip vertical adjustment through a range of 270mm, forward and backwards tilt and 360 degrees of rotation.

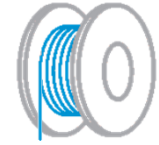
Aluminium meets JIS H 5302 international standards. The highly durable injection moulded parts are a 30% glass fibre reinforced, heat stabilized, hydrolysis resistant polyamide 66 resin. A20 is robust and environmentally friendly.



A20 features high quality spring technology to counterbalance the screen while having simple braking technology to fine tune weight for easy screen adjustment.

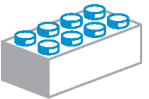


Keeping with the modular design theme, the A20 cable clips are based on the Apollo range where they have showed their effectiveness and longevity.



Limb limiter accessory is available to restrict the limb moving back beyond the desk edge avoiding damage to any obstructions behind the desk.

Materials were chosen for their functionality and environmental sustainability. Like all Integ products, A20 is modular and flexible. Upgrading from existing Apollo systems to A20 is simple and cost effective.



Integ A20 Monitor Mount

FEATURES & BENEFITS

• SUPERIOR CABLE MANAGEMENT

Minimise the hassle and stress of cables that un-plug or restrict the free movement of the monitor.

• COMPLIMENTS THE WORKSPACE ENVIRONMENT

The styling of A20 is complimentary to the Apollo classic with an abundance of functionality and modularity which hide behind the understated simplicity of the design. Clean lines and organic curves allow A20 to compliment any workspace.

• FINGERTIP CONTROL DELIVERING EFFORTLESS SCREEN MOVEMENT

After the simple initial setup of tightening the tension knob to suit the weight of the monitor, simple fingertip height adjustment is all that is required to allow smooth motion to the desired height.

• ADAPTS TO YOUR CHANGING ENVIRONMENT

All Integ solutions are built from a range of interchangeable modular components and A20 continues this design philosophy. This means components can easily be adapted to meet the unique needs of any installation plus evolve and grow with an organisations changing technology needs. Components are reusable and reconfigurable. Call the experts at Integ for a free Integ Discovery conversation.



SPECIFICATIONS

Available Colours:



White



Silver



Black

One-touch Vertical Adjustment:

270mm (10.6 in)

Horizontal Adjustment:

696mm (27.4 in)

Rotation:

180 degree

Tilt:

-100 to +45 degrees

Maximum Screen Weight:

10kg (22 lbs)

Minimum Screen Weight:

0kg (0 lbs)

VESA Compliant:

75 x 75 mm & 100 x 100mm

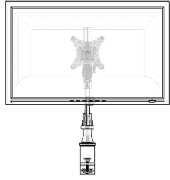
Recyclable content:

96% (based on weight)

A20 BASE MOUNT CONFIGURATIONS

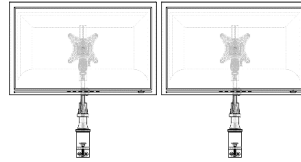
A20 Single Screen Base Mount

- Base dynamic mount with an angled first limb to achieve an ergonomic height range.
- Suitable for 5-95 percentile user height range.



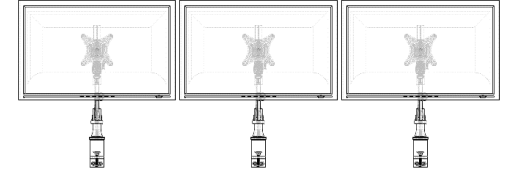
A20 Dual Screen Base Mount

- Dual assembly is achieved by using 2 x Single screen base mounts.
- Benefit: No limit on screen width and changing the distance between the clamps can allow increased flexibility to adjust the monitors vs a single pole solution.



A20 Triple Screen Base Mount

- Triple assembly is achieved by using 3 x Single screen base mounts.
- Benefit: No limit on screen width and changing the distance between the clamps can allow increased flexibility to adjust the monitors vs a single pole solution.



OPTIONAL ACCESSORIES

ChargeUp (AU/NZ only)

Purpose: Add convenient power options to the A20.

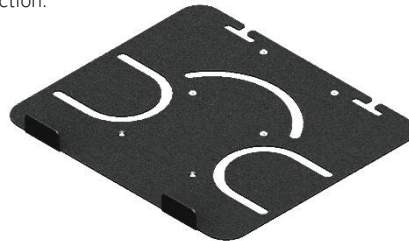
Features: 2 x Power (AU/NZ), 1 x USB-A, 1 x USB-C.



Laptop Trae

Purpose: Mount a laptop off an A20.

Features: Cooling slots, cable slots, durable sheet metal construction.



Limiter

Purpose: Limits the arm rotation so it is not able to hit a wall/divider behind the desk.

Features: A20 rotation around the base is limited to 216°.





WORKSPACE PRODUCTIVITY TOOLS

www.integinternational.com

[twitter/Integit](https://twitter.com/Integit) facebook.com/Integ.Tools

DISCLAIMER

All information in this leaflet is correct at the time of printing, however, Integ's policy is one of continuous product development. We reserve the right to change specification without notice.

