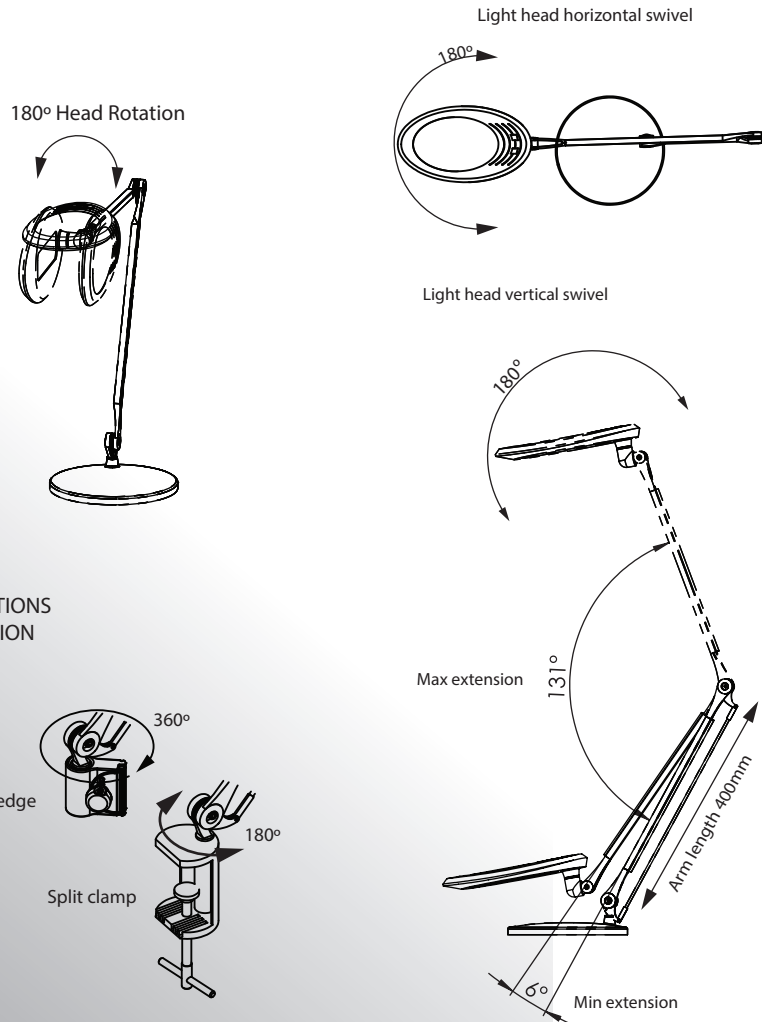


SAM1058X Ellipse LED Light Head Specifications

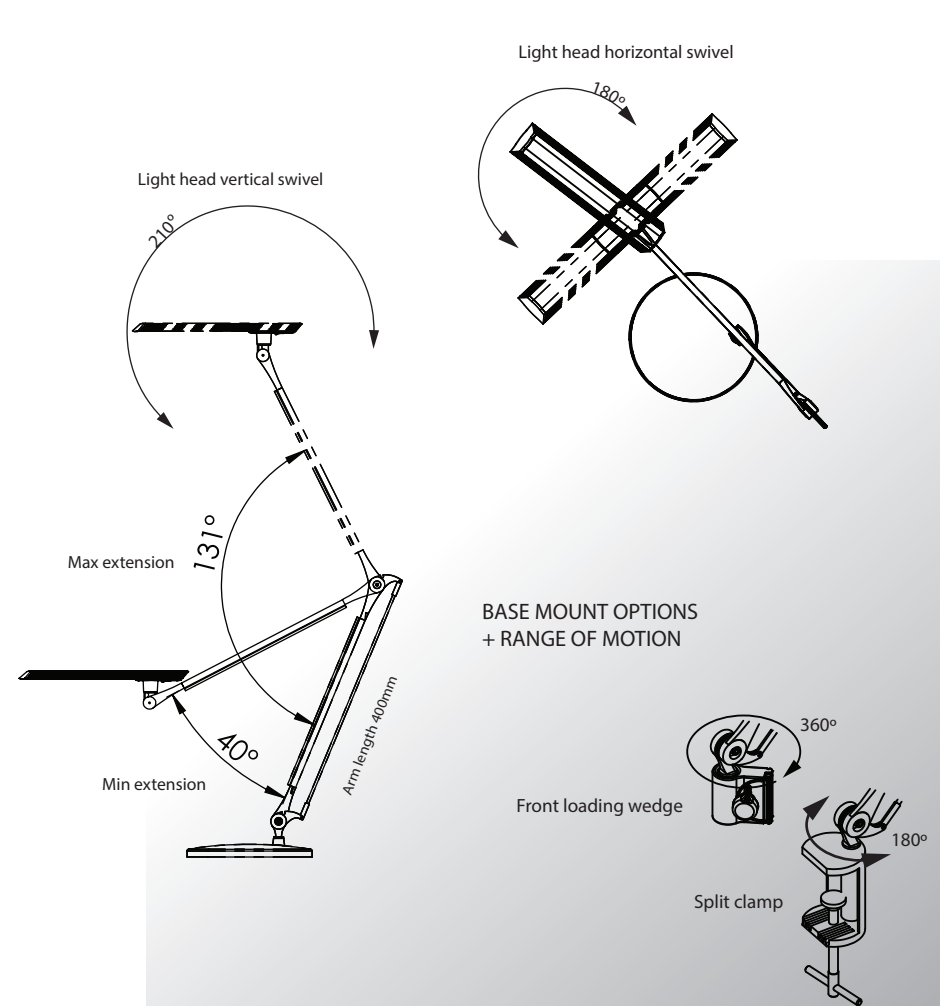
Correlated colour temperature (CCT)	5200 ± 300K (warm white)
Power consumption	9W
Input voltage	AC100 - 240V
Working voltage	DC12V
Working current	1.2A
Illuminance (Lux)	>1300lux (similar to sitting 400mm from a window)
LED Count	36 x Lumenmax
Luminous flux	450 Lumens (same as 1 x 40w incandescent bulb)
LED life	50,000hrs
Colour	Silver
Warranty	12 months
Environmental	Metal & plastics can be recycled



BASE MOUNT OPTIONS
+ RANGE OF MOTION

SAM0523X LED Light Head Specifications

Correlated colour temperature (CCT)	5000K (warm white)
Power consumption	12.5W
Input voltage	AC100 - 240V
Working voltage	DC32V
Working current	0.3A
Illuminance (Lux)	>1200lux (similar to sitting 400mm from a window)
LED Count	7 x Nichia
Luminous flux	770 Lumens (same as 1 x 60w incandescent bulb)
LED life	40,000hrs
Colour	Silver
Warranty	12 months
Environmental	Metal and plastics can be recycled



BASE MOUNT OPTIONS
+ RANGE OF MOTION